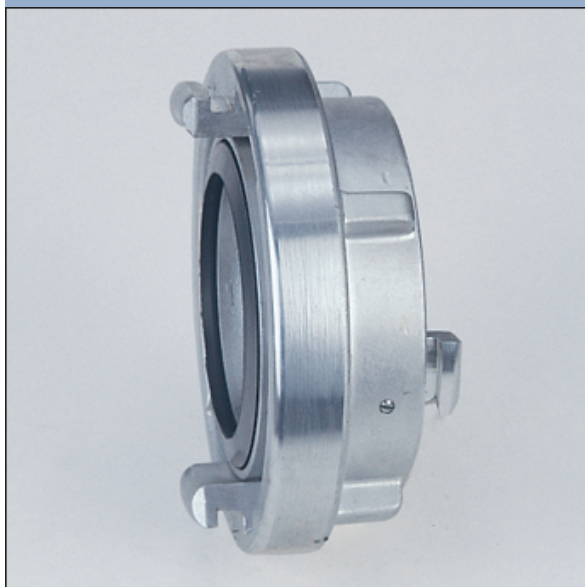


Adapters (Reducer)

- Aluminium alloys (A)
- Copper alloys (C)
- High grade steel (St)

Adapters Storz to Storz System



1600

For connection from one coupling nominal size to another one, adapters are used. In the most important sizes the seal support is a swivelling centre section, so that the seals do not rotate on each other even when they are connected with adapters. When adapters are connected to hose couplings, the ribs of the clamp fittings are opposite each other in fully coupled condition.



1600

Nominal size	Lug spacings b (mm)	Face-to-face length L (mm)	Weight (kg)	Ident-No.	Remarks	Alloy
25-Geka	31 / 40	45	0,180	60555733	non-swivelling	A
38-25-DS	52 / 31	34	0,230	40391633		A
45-25-DS	59 / 31	71	0,400	60608733	Storz 25, non-swivelling	A
52-Geka	66 / 40	49	0,360	60144833	non-swivelling	A
52-25=C-D-DS	66 / 31	34	0,320	40004833	DIN 14 341	A
52-25=C-D-DS	66 / 31	34	0,320	40004832	cast PN 10	A
52-25=C-D-DS	66 / 31	37	0,935	40004893		A
52-25=C-D-DS	66 / 31	66	0,950	40341946	non-swivelling	A
52-32=DS	66 / 44	51	0,350	40132133	non-swivelling	A
52-38=DS	66 / 51	52	0,375	40122733	non-swivelling	A
65-38=DS	81 / 51	37	0,480	40363533		A
65-45	81 / 59	76	0,600	60608633	Storz 45, non-swivelling	A
65-52	81 / 66	50	0,580	40232533	non-swivelling	A
75-52=B-C	89 / 66	39	0,620	40115033	DIN 14 342	A
75-52=B-C	89 / 66	39	0,650	60105033	with hole + chain	A
75-52=B-C	89 / 66	38	0,600	40115032	cast PN 10	A
75-52=B-C-DS	89 / 66	39	0,615	40426333		A

Nominal size	Lug spacings b (mm)	Face-to-face length L (mm)	Weight (kg)	Ident.No.	Remarks	Alloy
75-52=B-C-DS	89 / 66	39	0,620	60475733	seal silicone	A
75-52=B-C	89 / 66	38	1,790	40255693		A
75-52=B-C-DS	89 / 66	76	2,170	40038946	non-swivelling	A
75-65	89 / 81	61	0,780	40045933	non-swivelling	A
90-75	105 / 89	60	0,975	40079633	non-swivelling	A
100-75	115 / 89	47	1,035	60309433		A
110-52=A-C	133 / 66	100	1,620	60316333	non-swivelling	A
110-65	133 / 81	106	1,880	40159633	non-swivelling	A
110-75=A-B	133 / 89	48	1,510	30004433	DIN 14 343	A
110-75=A-B	133 / 89	48	1,495	30004432	cast PN 10	A
110-75=A-B	133 / 89	48	3,720	30004493	cast PN 10	A
110-75=A-B-DS	133 / 89	48	1,520	60309333		A
110-75=A-B-DS	133 / 89	48	1,550	60475833	seal silicone	A
110-75=A-B-DS	133 / 89	80	1,850	30370533	75-B = non swivelling	A
110-75=A-B-DS	133 / 89	48	2,600	60309399	steel insert ¹⁾	A
110-75=A-B-DS	133 / 89	80	3,240	30370599	75-B = non swivelling, steel insert ¹⁾	A
110-75=A-B-DS	133 / 89	55	3,740	40228846	non-swivelling	A
110-90-DS	110 / 105	89	1,870	40078933	non-swivelling	A
110-100	133 / 115	68	1,870	60309533		A
125-100	148 / 115	50	2,160	30285137		A
125-110-DS	148 / 133	102	2,970	60191633	non-swivelling	A
150-110-DS	160 / 133	89	3,630	30176633	non-swivelling	A
150-125-DS	160 / 148	120	4,500	60254633	non-swivelling	A
165-110-DS	188 / 133	96	4,100	60108633	cast PN 10, non-swivelling	A
205 - 150-DS	220 / 160	137	9,600	60393633	non-swivelling, 3 lugs	A
250 - 150	278 / 160	170	10,800	60670233	non-swivelling, 3 lugs	A
305 - 150	316 / 160	172	13,900	60670333	non-swivelling, 3 lugs	A